

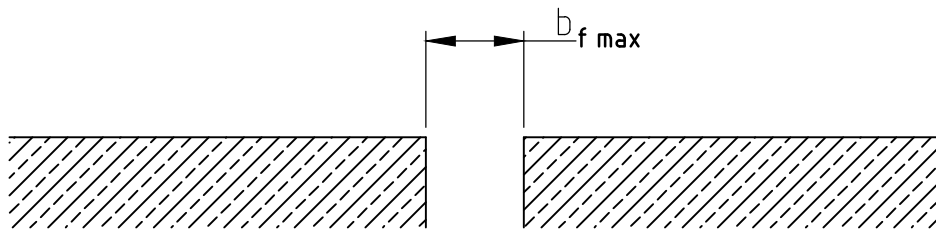
# Installation Instructions

## MIGUTEK Floor Joint Covers

(Example FP 55)

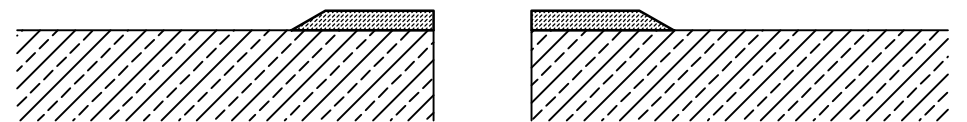
1.

First clean and prime the surface. Check whether the maximum joint width following our data sheet has been observed.



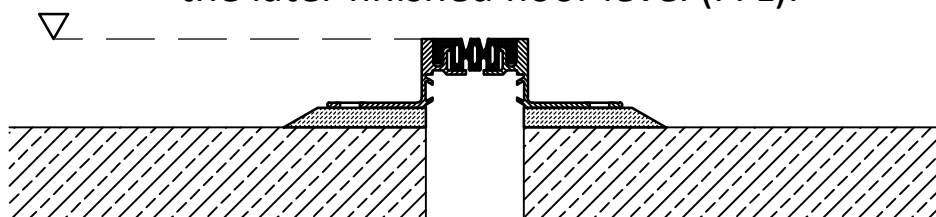
2.

Apply a mortar bed made from a suitable shrinking-free and pressure resistant mortar.



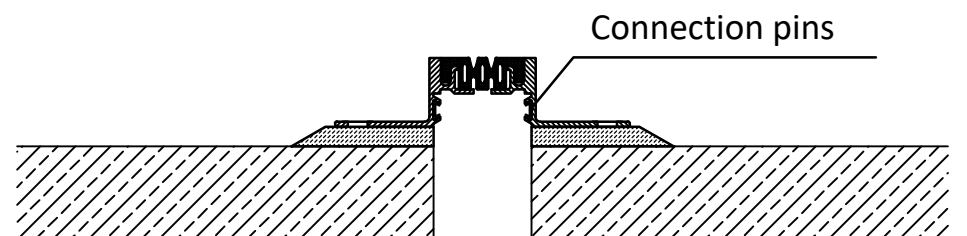
3.

Set the aluminium feet into the fresh mortar. In case of endless rubber inserts in max rolls cut small pieces of insert and use them as space keepers. Make sure that the profiles are installed free of hollow spaces under the feet and keep attention to the visible width acc. to data sheet. The upper edge of the profile has to be flush with the later finished floor level (FFL).



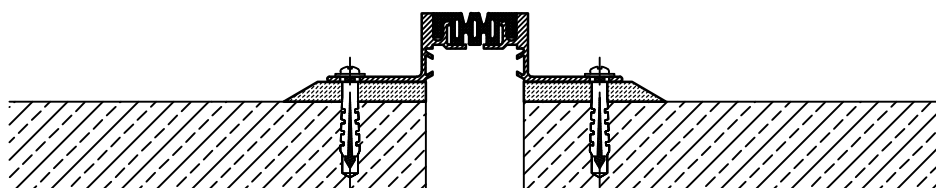
4.

Using the connection pins guarantees for an equal height and side connection for one-piece expansion joint constructions.



5.

After the mortar has hardened profiles can be fixed onto the floor. For standard profiles we recommend ss round headed screws  $\phi 4,8 \times 50$  and nylon dowels  $\phi 8$  + washers, fixing distance 300mm. Please observe mounting instructions of the manufacturer of the dowels.



6.

After processing of adjacent surface the protecting adhesive tape can be removed.

